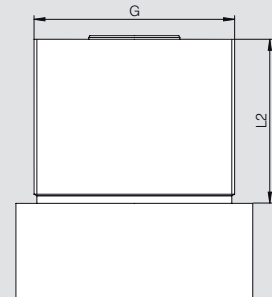
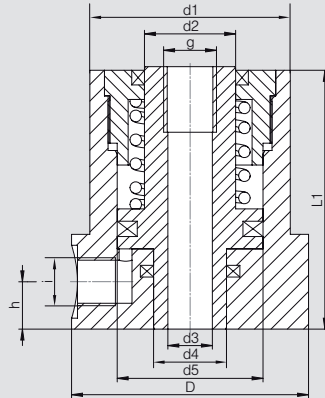


Operating pressure max. 500 bar.



TYPE 82-50

Use

Hollow-piston cylinders have a through-hole in the piston rod. In conjunction with a connecting rod, this allows many different possible uses.

The diameter of the through-hole in the piston is tailored to the corresponding connecting rod (strength 8.8).

Here, the cylinder can be used as both a pressure cylinder and a pulling cylinder.

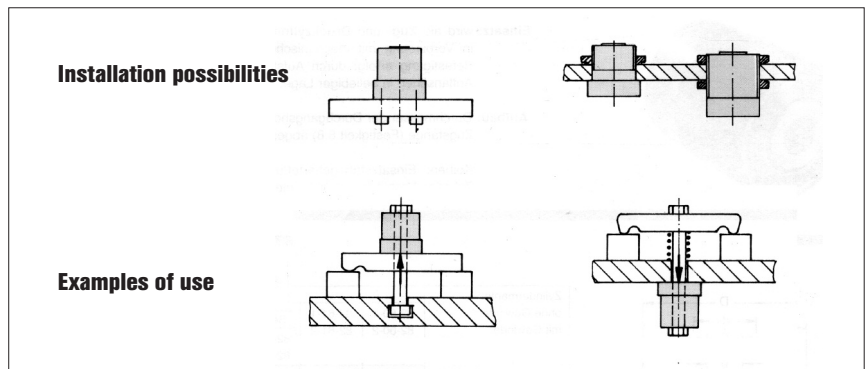
General

- If a piston rod with a metric ISO female thread is required, a Heli-Coil insert 1.5xd in length is screwed into the standard HC thread (see size »g«) prior to delivery (order index »1«).
- Example: After the thread insert is fitted, HC M8 corresponds to M8x12.
- Threaded holes in the cylinder flange can be made to the customer's specifications.

Note

If several single-action cylinders are used simultaneously, parallel pipes are recommended for the cylinders.

Cylinder jacket		Order number					
		82-50-1	82-51-1	82-52-1	82-53-1	82-54-1	82-55-1
without thread		82-50-1	82-51-1	82-52-1	82-53-1	82-54-1	82-55-1
with thread		82-50-2	82-51-2	82-52-2	82-53-2	82-54-2	82-55-2
Stroke	(mm)	10	10	12	12	16	16
Clamping force							
Pre-stroke	(kN)	3,68	5,93	9,30	14,50	22,70	37,19
Piston surface	(cm ²)	3,77	6,03	9,42	14,72	23,12	37,68
d ₁	(mm)	40	45	55	65	80	100
d ₂	(mm)	16	20	25	32	40	50
d ₃	(mm)	8,2	10,2	12,2	16,2	20,2	27,2
d ₄	(mm)	12	16	20	25	32	40
d ₅	(mm)	25	32	40	50	63	80
D	(mm)	50	55	65	70	80	100
g		HC M8	HC M10	HC M12	HC M16	HC M20	HC M27
G		M40x1,5	M45x1,5	M55x1,5	M65x1,5	M80x2	M100x2
h	(mm)	12	12	13	15	21	23
i		G1/4	G1/4	G1/4	G1/4	G1/4	G1/4
L ₁	(mm)	60	65	72	78	96	110
L ₂	(mm)	36	41	45	50	60	65



Order example: **82-52-2-0**

Designation
0 without thread insert
1 with thread insert